



Laser Systems GmbH

Marker-Software

LS2000-Software runs under Windows. You can create programs flexible and variable with a flowchart. By request our experts develop your customised user program.

Simple programming - fast marking

Additional with your laser system you get a software package that contains following possibilities:

- Process control in flowchart logic
- Execution in real-time or single step
- Simulation and debugging
- Teach-In mode
- configurable display
- simple integration to process lines
- Image processing (optional)
- on-line documentation

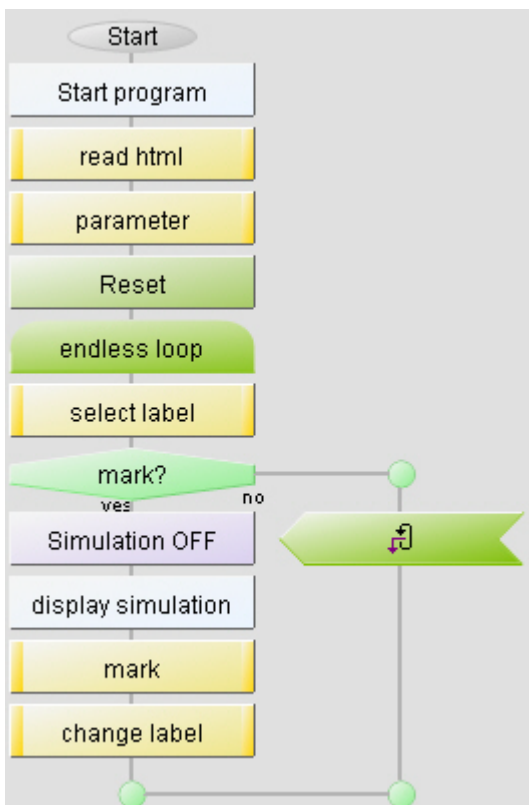
Helpful programs simplify connection to CAD and facilitate laser fitted and individual fillings and hatchings.

You optimise vector- (hpjl, dxf) and raster graphics for laser marking. Programming variables allows connection to data bases.

ORDER	0001141814000020001		
Label name.	FSW0233	Label no.	BC145853
Drawing no.	C413747	No.labels	1
1. plant	1141814020001	Prodedced at	2005-05-12
2. plant	1141814020001	Producer	Laser Systems
x-size		Y-size	

BACK FORWARD

STOP MARK



Galvo Parameters

laser speed mm/s

marking or trim orientation °

coordinate transformation

x position mm

y position mm

field orientation °

OK Close Apply

Overview of features

Software functions	Marking contents
<p>Surface: process control in flowchart logic execution in real-time or single step configurable display function integration of html-sides for control and display function</p> <p>Functions: free scalable any angle fill- and hatching algorithms wide marking round marking graphics barcodes</p> <p>Variables: alpha numerical integer number real number free chose of variable name diverse I/O possibilities serial numbers, alpha numerical also save and load database connection via ODBC</p> <p>Control: while-loops for-loops case differentiation subroutines, macros manual data input</p>	<p>Graphics: import of dxf-data import of hp-gl import of raster graphics own produced logos and graphics</p> <p>Barcodes: code 39 code 128 2/5 interleaved datamatrix ECC200 EAN 8/13 PDF 417 other codes on request</p> <p>Special fonts: OCR dot-matrix approval symbols other fonts on request</p>
	Interfaces (Hardware)
	RS232 parallel I/O-ports network (optional) CAN-bus (optional) remote maintenance (optional) barcode reader input
Marking properties	Image processing (optional)
Beam deflection via galvanometer mirrors Marking speed up to 1000 characters/s ^a Marking field up to 220 x 220 mm ² ^b Marking of moving parts (on-the-fly)	The image processing system consists of a video-camera and a frame grabber card. It is used to find and correct the position of your parts. Video parameters like contrast, brightness etc. can set and saved depending to your application. The image processing is able to do: edge detection area search code reading of 2D-barcodes geometric model finder (on request)
Quality	Made in Germany, Research, development, production, application and service in one company guarantee optimised support and quality.
Experience	Decades of know-how in laser technology.
Advice	Our application lab waits for your process studies and tests.



Laser Systems GmbH

Gollierstr. 70

D-80339 Munich

Phone: ++49 (0)89 502 002 - 0

Fax: ++49 (0)89 502 002 - 30

E-mail: info@ls-laser-systems.com

Internet: www.ls-laser-systems.com

a) max. speed, depending on application

b) Field size, depending on focusing optic